


Tips to install the driver for Dino-Lite Plus series in Windows 10

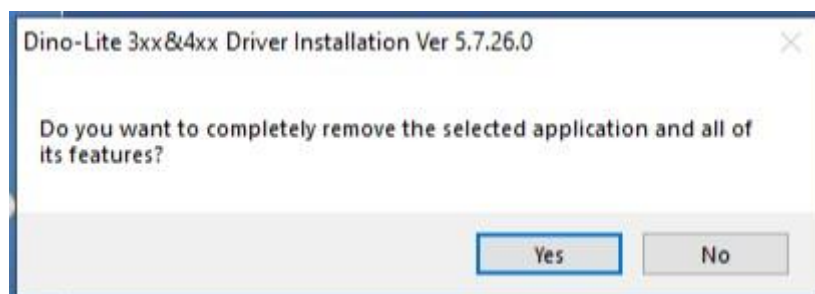
Part A:

To work the Dino-Lite AM311ST in Windows 10, you will need to disable the Driver Signature Enforcement before installing the driver for AM311ST. Use the following steps to disable driver signature enforcement.

1. Click the **Start**  **menu** and select **Settings**.
2. Click **Update and Security**.
3. Click on **Recovery**.
4. Click **Restart now** under **Advanced Startup**.
5. Once your Computer has rebooted, you will need to choose the **Troubleshoot** option
6. Click **Advanced options**.
7. Click **Startup Settings**.
8. Click on **Restart**.
9. On the **Startup Settings** screen press **7** or **F7** to disable driver signature enforcement.

Part B:

1. Your computer will restart and now you will be able to install driver.
2. Download the driver “Dino-Lite Plus”, the driver can be found at <https://www.dino-lite.com/download01.php>
3. Click the “dnldr34.exe” to install the driver. You will need to click the dnldr34.exe **again** if the following popup window appeared during the driver installation.



4. During the installation, Windows will inform you that it can't verify the publisher of this driver software. Choose **“Install this driver software anyway”** to complete the installation.

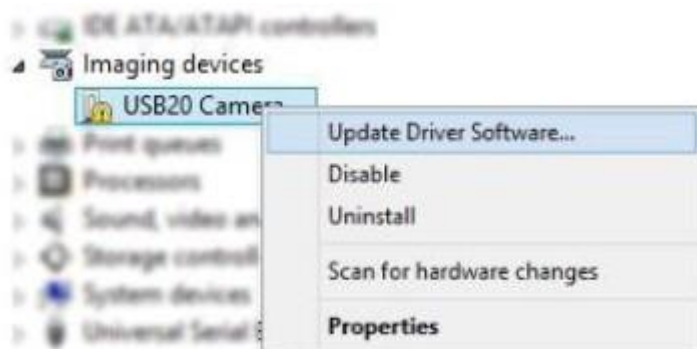


5. Connect the Dino-Lite to the USB port to start DinoCapture2.0

Part C:

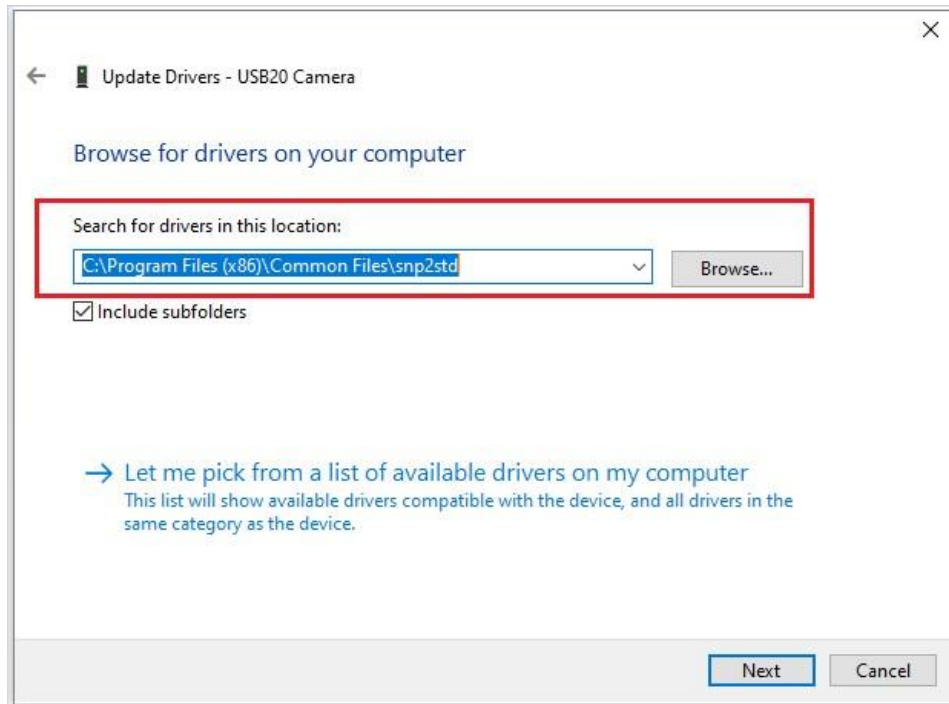
If you still have problem using Dino-Lite, please check if the device driver is in a problem state.

1. Open the **Device Manager**
2. Under the **Imaging devices** list, device that marked with a symbol of black "!" on a yellow field indicates that there is a problem with the device. Right click over the device, and select **Update Driver Software...**

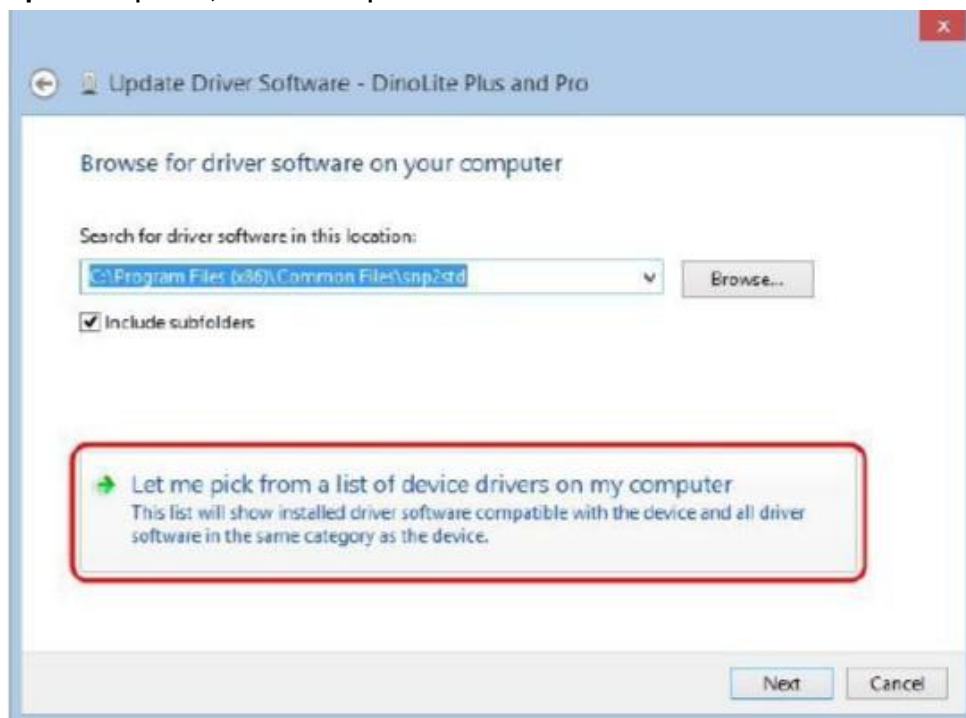


3. In the Update Driver Software window, select the **Browse my computer for driver software** option.

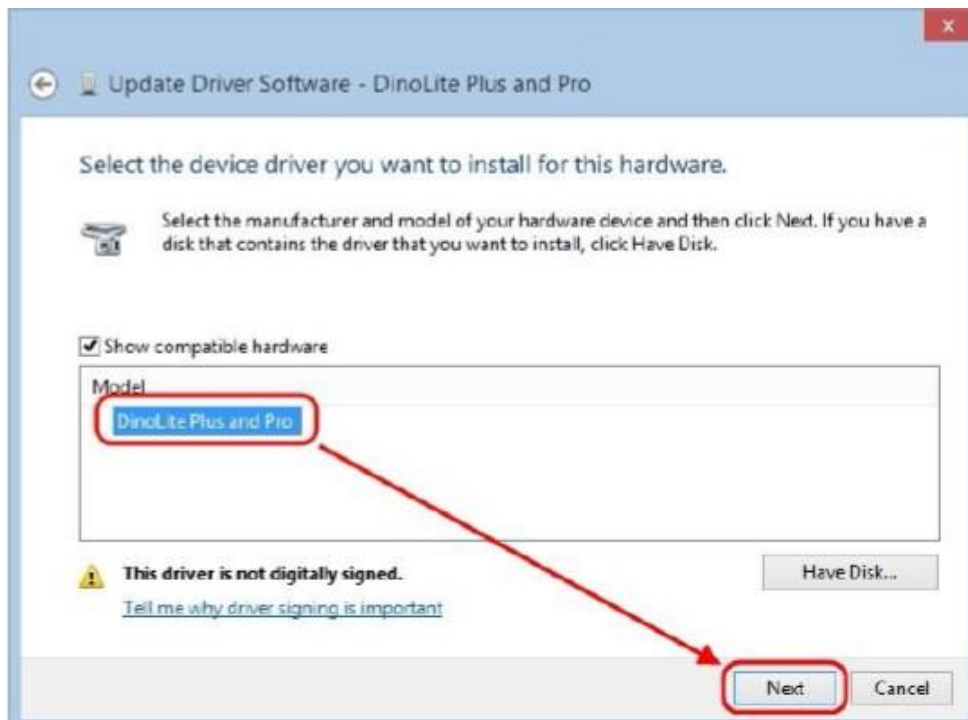
4. Then select **Search for drivers in this location by Browse C:\Program Files(x86)\Common Files\snp2std**



5. Then select the **Let me pick from a list of device drivers on my computer** option, and then press “Next” button.



6. Select the device driver **DinoLite Plus and Pro** for your model, and then press the **Next** button.



7. A Windows Security dialog similar to the screenshot should popup. Select **“Install this driver software anyway”** to continue the installation.



8. You are now able to use the Dino-Lite after the installation completed.

Note: If you restart your computer again the driver signature enforcement will be re-enabled.